



Welcome to the St. Joe Valley Metronet Meeting

April 15, 2009
Union Station



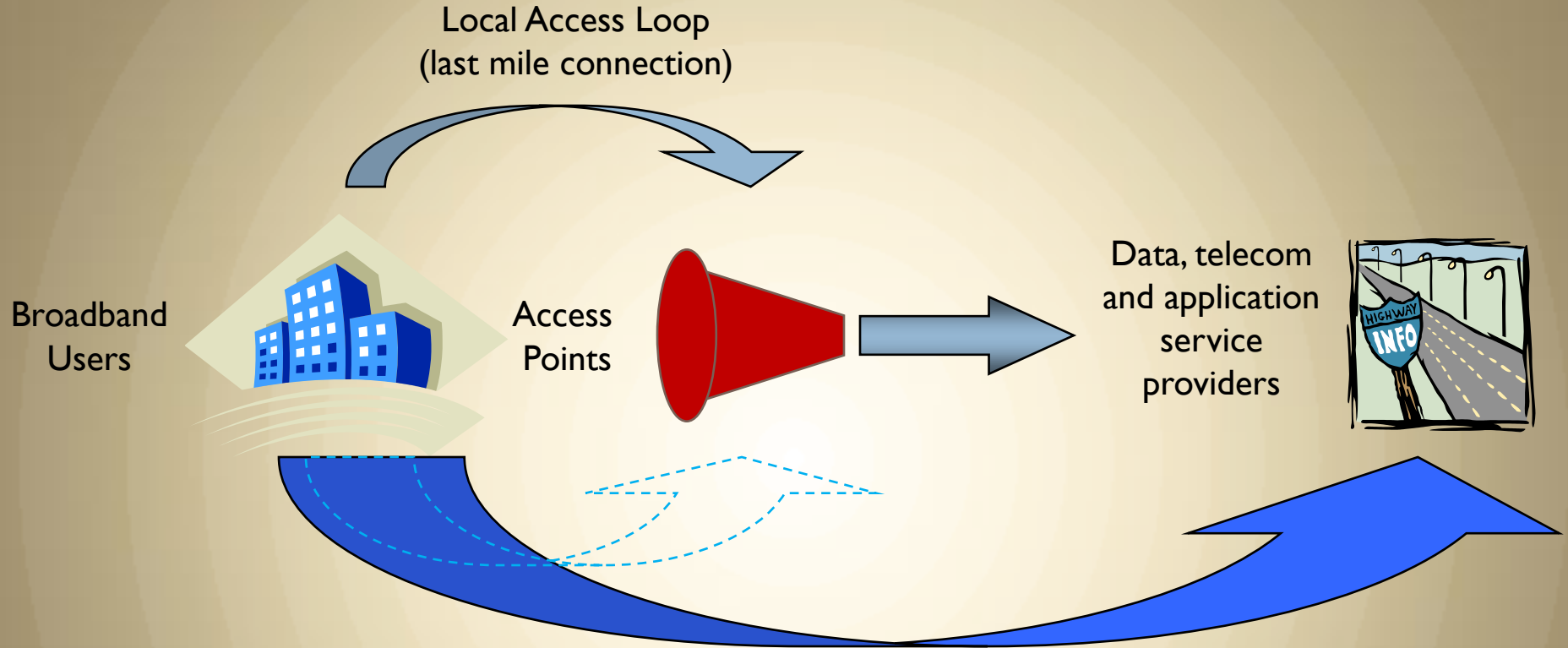
What is the St. Joe Valley Metronet?

St. Joe Valley Metronet?

A dark, fiber optic network approximately 50 miles in length (and growing) in St. Joseph County that provides virtually unlimited bandwidth for organizations' IT needs.

A physical connection between organizations that supply data, telecommunication and application services and organizations that use them.

Connecting Providers to Users



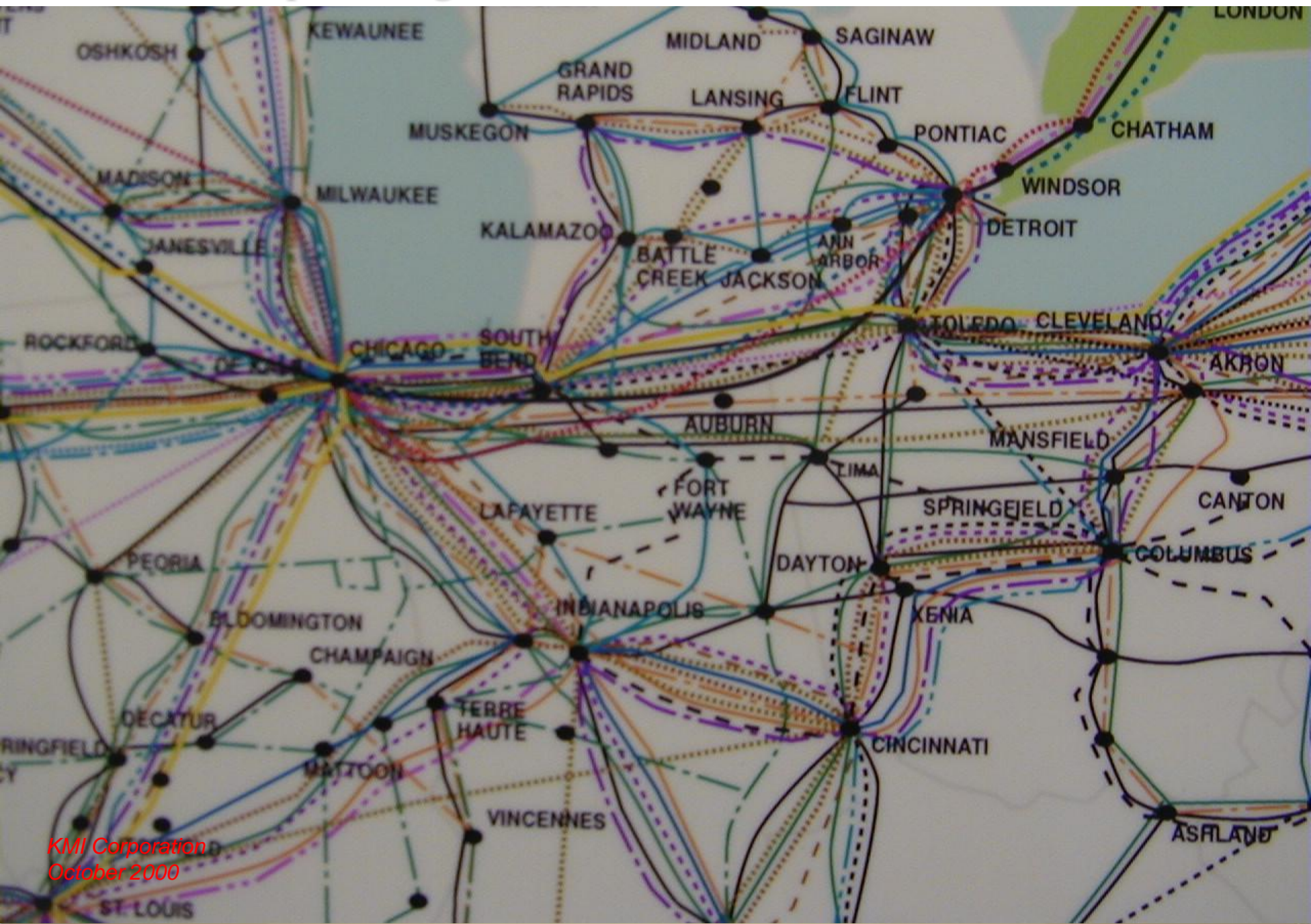
The St. Joe Valley Metronet allows an organization to gain direct access to the service provider of its choice without forcing the service provider to build an independent fiber connection.

North American Fiberoptic Long-Haul Routes



KMI CORPORATION
Fiberoptic Market Research
A PERKINS COMPANY
CONSULTING STUDIES • MULTI-CLIENT STUDIES
SERVICES • MAPS • NEWSLETTERS
100 Cup Avenue at 31 Bridge Street,
Providence, Rhode Island 02940 • USA
843.6771 • Fax: 401.847.5866
4035 (USA) • www.kmicorp.com
NOVEMBER 2000 KMI CORPORATION

Midwest Fiberoptic Long-Haul Routes



KMI Corporation
October 2000

Why Dark Fiber?

- **Virtually Unlimited Bandwidth at a Fixed Cost**
 - You pay a flat fee for the fiber you lease, regardless of how you use it.
- **Independence**
 - create your own configurations; easily evolve by simply upgrading your electronics.
 - connect directly to a carrier neutral collocation facility to choose your Internet service provider and have the ability to change as often as needed.
- **Security and Reliability**
 - As the sole user of your fiber, no one can access your network or data.
- **Connectivity**
 - Fast and reliable connectivity for data sharing, large bandwidth file transfers and many other operating efficiencies such as IP Voice networks that share trunking.

Bandwidth Comparisons

Dialup
56K

DSL
256K/1.5M

T1
1.5Mbps

10Mbps LAN

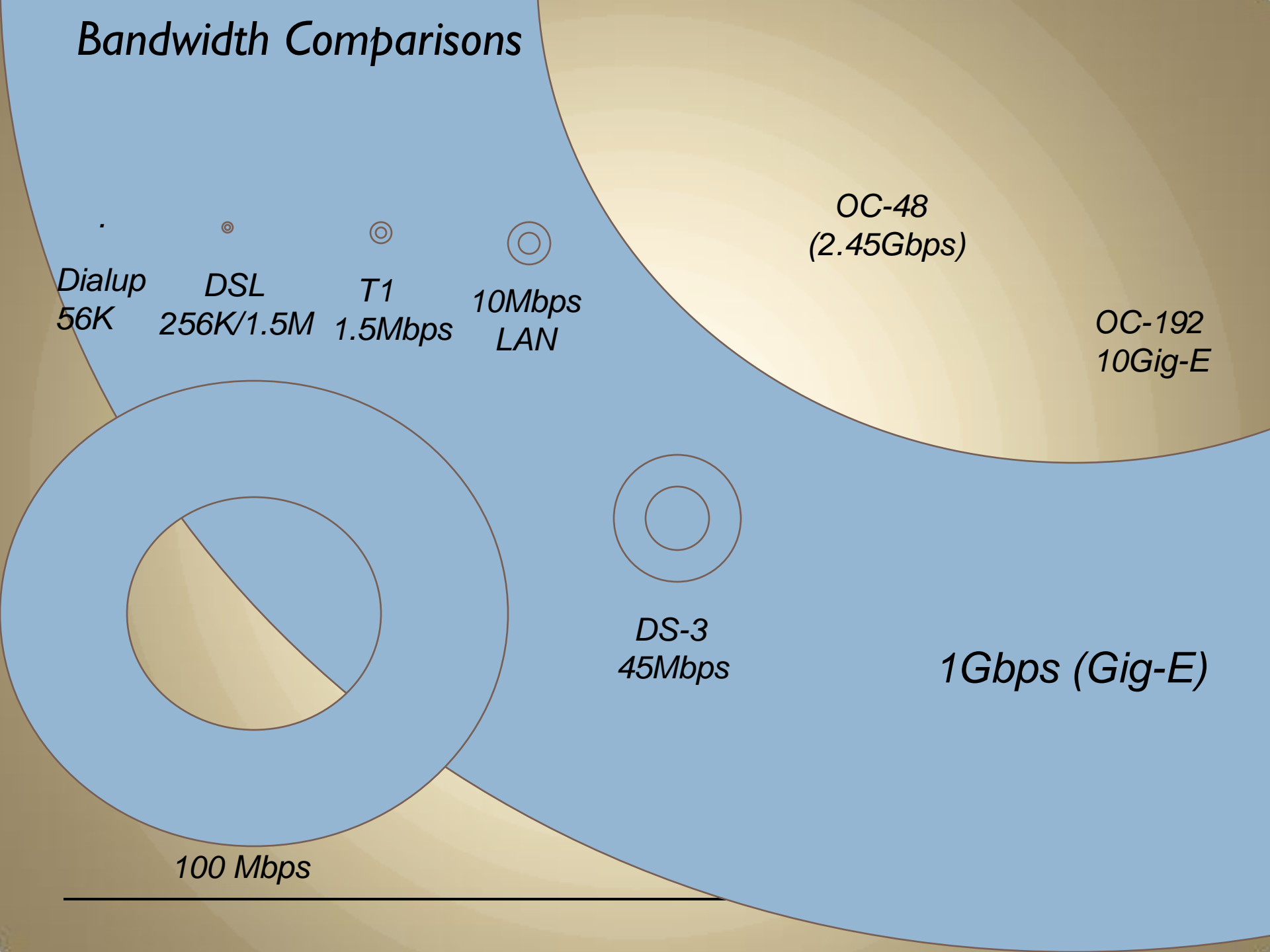
OC-48
(2.45Gbps)

OC-192
10Gig-E

DS-3
45Mbps

1Gbps (Gig-E)

100 Mbps



Anson

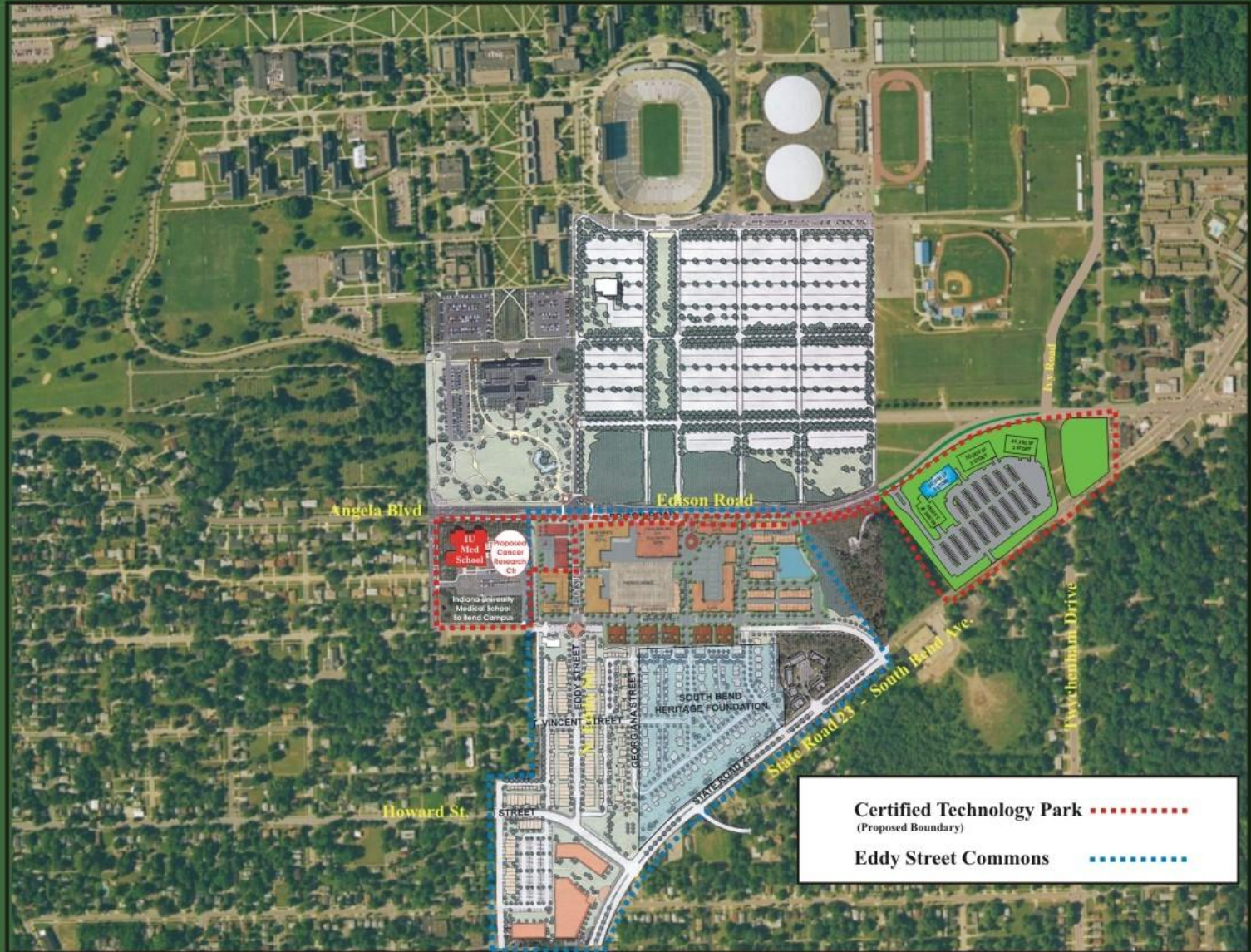


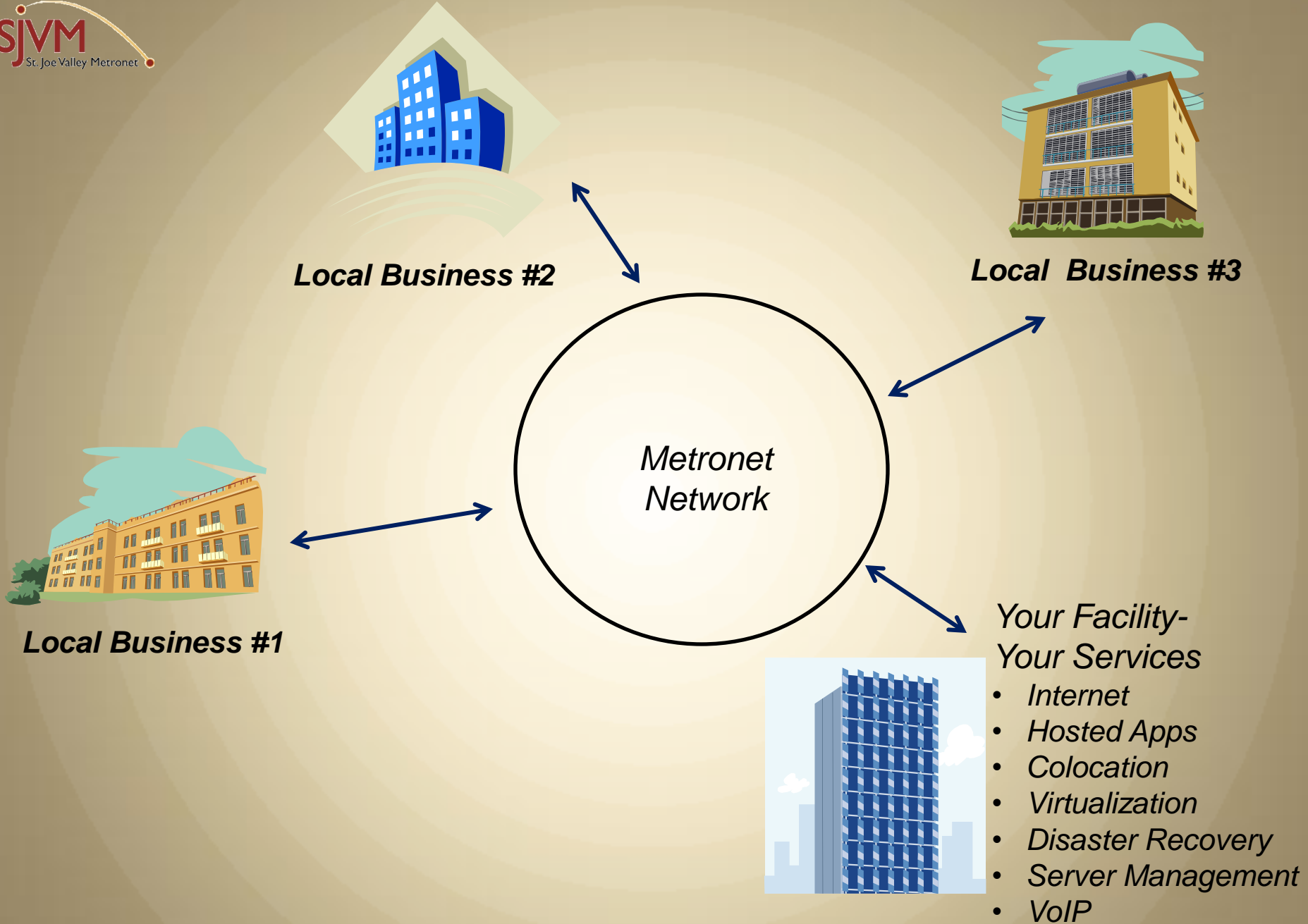
Anson Project

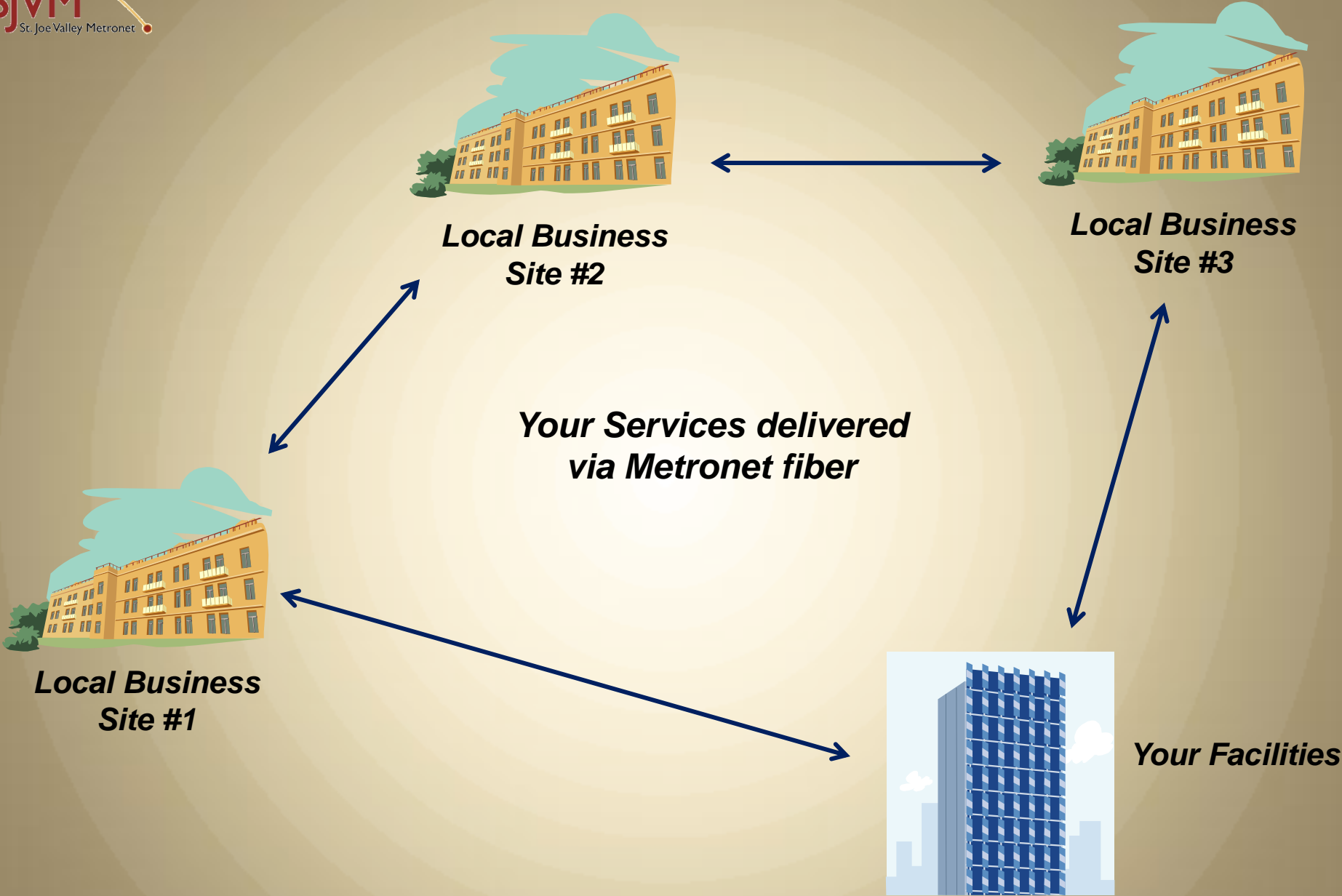
- Amazon.com has confirmed it will locate a distribution center in Whitestown, north of Indianapolis.
- The more than 600,000 square foot building will be in the mixed-use development known as Anson.
- The Indiana Economic Development Corp. says Amazon will create more than 1,200 jobs at the center by 2010.

Lake Nona Medical City

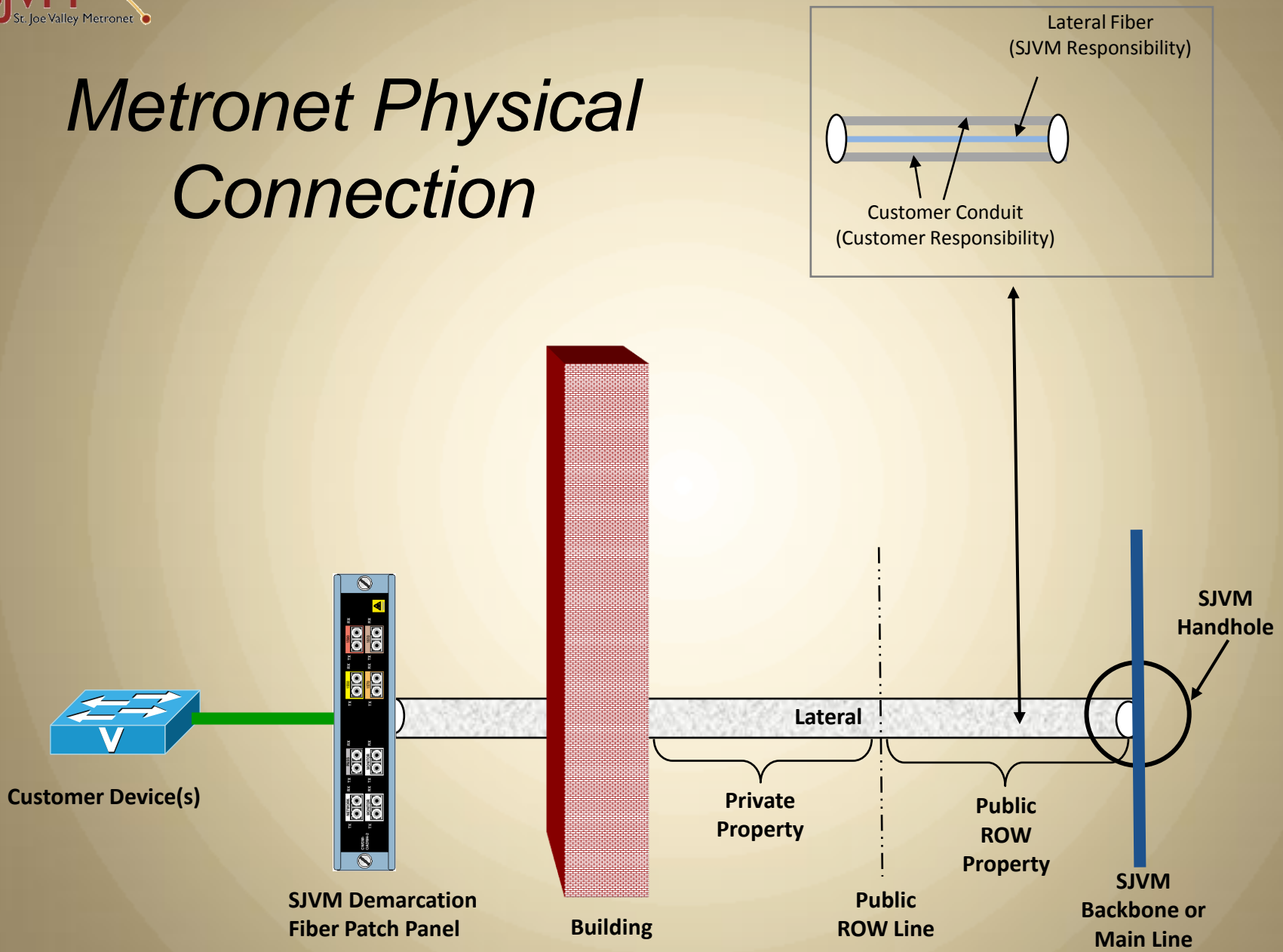








Metronet Physical Connection



Connecting to Metronet

- Lateral
 - a physical connection from the building to the fiber backbone
 - consists of conduit, fiber & patch panel
 - SJVM can construct entire lateral or fiber only
 - 90% of laterals cost between \$7K and \$10K



Michiana Hematology Oncology

Mike Rupley, IT Director



Working with St. Joe Valley Metronet

Where are we today?



Working with St. Joe Valley Metronet

- Tell us about your services
 - Reference on our web site
- Metronet can partner with you during sales cycle
- Metronet will provide proposal for connection and fiber costs
 - One-time charges – lateral construction, fiber connection
 - Annual charges – fiber subscription fees

Subscription Fees

- Annual contracts
 - no long term commitments*
- Based on calendar year
 - 1st term is pro-rated to 12/31
- Prepay for service
- Point-to-Point connection = \$12,000/year
 - Service Provider = **\$10,200/year**
 - Add another site = \$2,400/year
 - No additional maintenance charges